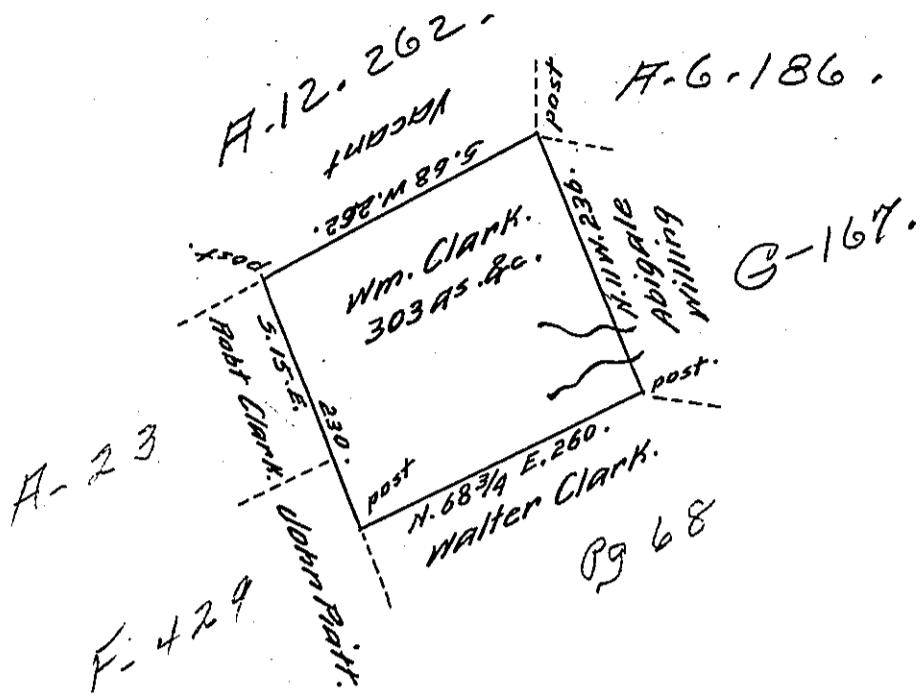


Hazle and 36

Foster -  
LUZERNE.



A Draft of a tract of land Called — Situate on the waters of  
 Beaver Creek in the County of Northumd. Containing three  
 Hundred & three acres & all. Survd for ~~Wm.~~ <sup>Wm.</sup> Clark the 12th  
 Day of Sept. 1793 by virtue of a warrant dated the 13th Day  
 of June 1793. by Wm. Gray, D. J.

To Daniel Brodhead Esqr.

Surv. Genl.

IN TESTIMONY that the above is a copy of the original remaining on file in  
 the Department of Internal Affairs of Pennsylvania, made  
 conformably to an Act of Assembly approved the 16th day of  
 February, 1833, I have hereunto set my Hand and caused  
 the Seal of said Department to be affixed at Harrisburg,  
 this fifteenth day of February 1911

*Nancy Houch*  
 Secretary of Internal Affairs.